



# Education Cloud for Advancement & Alumni Relations

## Build trusted lifelong alumni and donor relationships

Engage alumni, streamline fundraising and optimize operations to drive an institution-wide strategy. Meet the goals of your institution and communities with trusted AI and intelligence.

### 1 Alumni Portal & Mentorship

Foster meaningful connections and engagement across class years and interests. Create mentorship programs and compare participants to find the best match.

### 2 Data-Driven Donor Insights

Drive donations and streamline portfolio management with a comprehensive view of engagement and giving.

### 3 Agentforce for Education

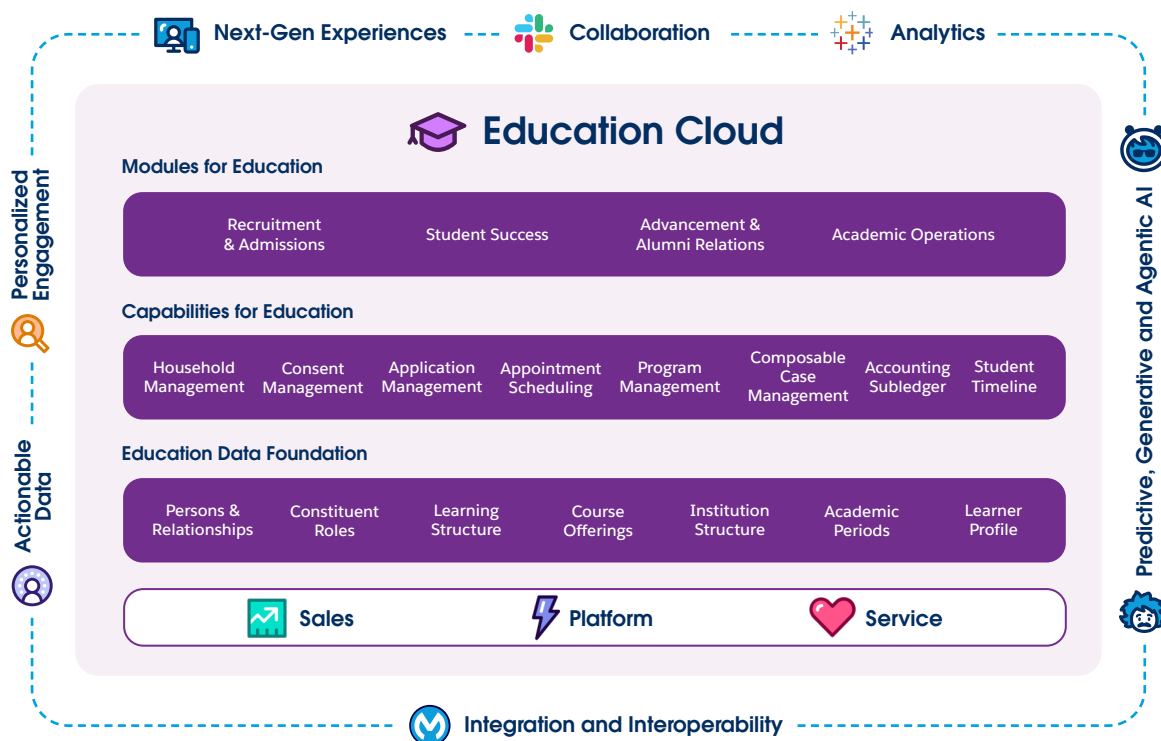
Simplify philanthropic research for major gift success with autonomous AI Agents.

# +10%

## Increase in fundraising

Source: 2023 Total Economic Impact™ of Salesforce for Education

## How Education Cloud Works



# Education Cloud for Advancement & Alumni Relations



Capability	Description
<b>360 Degree View of Alumni</b>	Comprehensive profiles and engagement tracking for alumni and constituents.
<b>Agentforce for Education: Philanthropic Research</b>	Understand key alumni and donor insights fast with insightful research summaries and assessments that highlight philanthropic interests, upcoming wealth transfers, wealth capacity and more.
<b>Advancement Tools for Next Generation Giving</b>	Prioritize requests, easily generate research profiles using AI, and track indicators and assessments in the new Research App. Plus, model complex gifts, calculate projections, and visualize gift structures with the new Gift Planning App.
<b>Branded Portal and Directory</b>	Foster connections among alumni and across class years and interests.
<b>Alumni Journeys</b>	Leverage multiple marketing channels to manage and enhance alumni journeys effectively.
<b>Alumni Engagement Insights</b>	Leverage the power of Data Cloud to gain insights into the impact of your alumni activity.
<b>High Impact Mentoring</b>	Create mentorship programs, compare and match participants and manage schedules and interactions within the portal.
<b>Donor Insights</b>	In-depth biographical, demographic, and relational data to allow institutions to craft effective fundraising strategies.
<b>Portfolio Management</b>	Supports tracking, moves management, and transition of ownership of donors and volunteers across internal teams.
<b>Gift Processing</b>	Gift recording and designated fund allocations with support for third-party payments in single and batch entries.
<b>Pledge and Donation Management</b>	Adapt amounts, dates, and pledge and gift schedules.
<b>Financial Reconciliation</b>	Bridge advancement transactions in CRM with finance for accurate and efficient financial management.

Sign up for a free trial of Education Cloud at [bit.ly/EducationCloudTrial](https://bit.ly/EducationCloudTrial)

